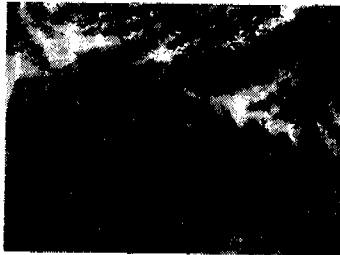


MATCHON INFORMATION CENTER		Subject Heading :
Source :	BANGKOK POST	No : 48374116
Date :	21 JUL 2005	Page : 08

ART

EXHIBITION SOMDECH PHRA SRINAGARINDRA PARKS ON CANVAS



Phangnga



Kanchanaburi



Ayutthaya

Remembering the Princess Mother⁰⁸

"The Somdech Phra Srinagarindra Parks should be kept clean and beautiful. The parks do not have to be large and should be open, free of charge, for public use."

This was HRH the Princess Mother's initiative, dictated to the board of the Somdech Phra Srinagarindra Parks Foundation.

As the Thai people commemorate the 10th anniversary of the death of the Princess Mother this month, the board of the Somdech Phra Srinagarindra Parks Foundation has kept her royal command alive. The board, with support from Hat Thip Plc and Toshiba Thailand Co Ltd, invited the country's foremost artists to paint scenes of Somdech Phra Srinagarindra

parks in four provinces across the country as a way to remember the beloved "Somdej Ya".

Now more than 120 paintings from some 34 artists are on display at the exhibition called "In Memory of the Princess Mother" at the Queen's Gallery until August 7. The works are in watercolours, oils, print and mixed-media. Each artist has his signature style and colours.

Included are works by veteran artists such as Preecha Taonthong, Pratuang Emcharoen, Thana Lauhakaikul, Pisanu Suphanimit, Thongchai Rakpathum, Tavorn Udomvit, Kosol Pinkul, Suchart Wongthong, Charoon Boonsuan, Somsak Raksuwan, Nukoon Panyadee, Praiswan Dagiang, Sa-ngiam Yarangsi, Apirak Panmoonsilp, Engon Homsuwan, Yarnvit

Koonchaethong and others.

The paintings were done in Chiang Rai, Kanchanaburi, Phangnga and Ayutthaya in April and May. Some of the artists showcased the Princess Mother's many royal activities in their paintings.

'In Memory of the Princess Mother' will be on display at the Queen's Gallery daily (except Wednesdays) from 10am to 7pm, until August 7. There will be an auction of the paintings on August 7 at 1:30pm. Proceeds will go to the foundation to support and maintain Somdech Phra Srinagarindra parks for public use in 12 provinces around the country. For more information call 02-512-0270-81 or the gallery on 02-281 5360/1.