

# MAE FAH LUANG UNIVERSITY

AT A GLANCE  
2013-2014



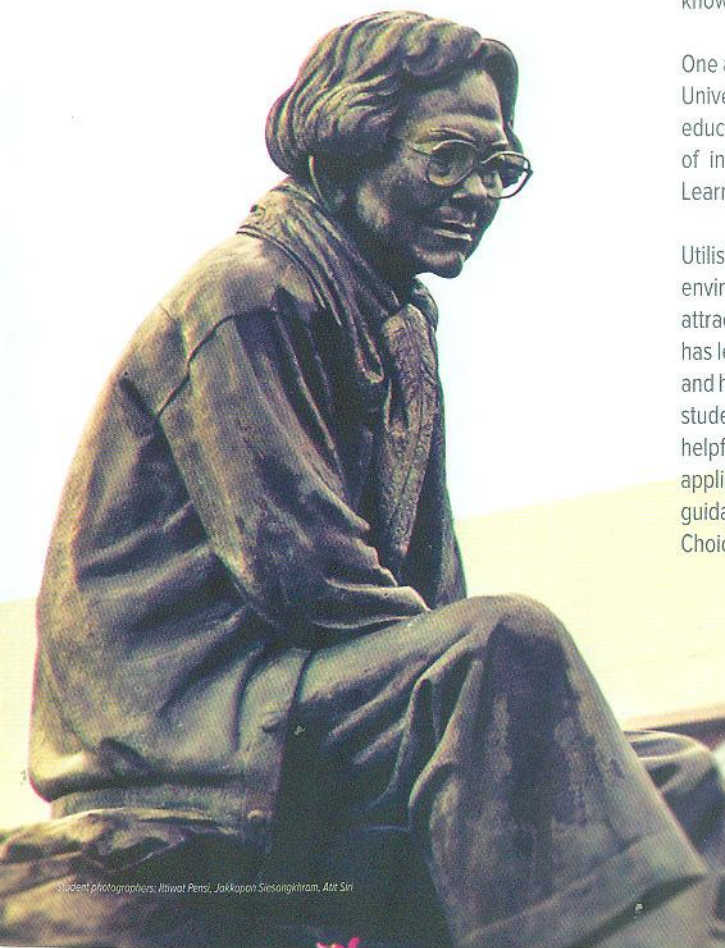


# ABOUT US

Since 1998, Mae Fah Luang University (MFU) has been established as a public autonomous university situated at the gateway to the Greater Mekong Sub-region (GMS), in the heart of the ASEAN region. The university was founded to meet the needs of the people in the North of Thailand and its neighbouring countries, and to commemorate the gracious contributions of the King's Mother, Her Royal Highness Princess Srinagarindra, lovingly known to her subjects as "Mae Fah Luang".

One and a half decades of development has led to Mae Fah Luang University being recognised as Thailand's fastest growing higher educational institution. English is used as the primary medium of instruction in the majority of courses, with Problem Based Learning being MFU's method of teaching.

Utilising the "University in the Park" concept, MFU offers an environment and culture highly conducive to living and learning, attracting numerous visitors from many countries annually. This has led to various forms of mutual cooperation and collaborations, and has encouraged the rapidly increasing number of international students. The International Affairs Division offers friendly and helpful advice, from the initial enquiry stage, assistance with application procedures, as well as immigration and travel guidance. We invite you to consider MFU as the University of your Choice on your path to future learning.



# SCHOOLS

## AND PROGRAMMES OFFERED

### SCHOOL OF **AGRO-INDUSTRY**

Providing high quality teaching and research with the vision of being the centre of the agro-industry in the ASEAN region. It is committed to the training of competent agro-industry technologists with professional ethics, who feel a responsibility to maintain and enhance their professional competency through a continued expansion of knowledge and proficiency.

#### Undergraduate Programmes

- B.Sc. in Food Technology
- B.Sc. in Technology Management of Agricultural Produce and Packaging

#### Graduate Programmes

- M.Sc. and Ph.D. in Food Technology
- M.Sc. in Technology Management of Agricultural Produce

### SCHOOL OF **ANTI-AGING AND REGENERATIVE MEDICINE**

With the goal to establish Thailand as being the leader of research and technology in this field. Using the most high-tech and sophisticated equipment available to serve the patients and advance student research, the School has the confidence in being one of the world leaders of research in this field.

#### Graduate Programmes

- M.Sc. and Ph.D. in Dermatology
- M.Sc. and Ph.D. in Anti-Aging and Regenerative Medicine
- M.Sc. and Ph.D. in Anti-Aging and Regenerative Science

### SCHOOL OF **COSMETIC SCIENCE**

With the pride of being the first and foremost institution aimed at the study of cosmetics in ASEAN, this is the ideal School for students interested in this specialised field. All programmes have been designed to provide fundamental and advanced knowledge as well as skills in cosmetic science for students wishing to pursue careers in the cosmetic industry.

#### Undergraduate Programmes

- B.Sc. in Cosmetic Science
- B.Sc. in Beauty Science

#### Graduate Programmes

- M.Sc. and Ph.D. in Cosmetic Science

### SCHOOL OF **HEALTH SCIENCE**

Aiming to produce graduates in health sciences of high professional and ethical quality, and continuing to develop its teaching and research to surpass international standards. The School has been very active in developing programmes that combine the excellence of traditional knowledge and local wisdom with the most modern alternative techniques.

#### Undergraduate Programmes

- B.ATM. in Applied Thai Medicine
- B.P.H. in Public Health (Public Health, Environmental Health or Occupational Health and Safety)
- B.P.T. in Physical Therapy
- B.Sc. in Sports and Health Science

#### Graduate Programme

- M.Sc. in Public Health



# HOW TO APPLY

## 1 CHOOSE YOUR PROGRAMME

From the 11 Schools listed in this guide choose one programme that you wish to apply for.

## 2 SUBMIT APPLICATION FORM

Complete the attached application form (also available online or at the International Affairs Office) and submit via post, email, fax or in person.

## 3 RECEIVE CONFIRMATION

E-mail or telephone confirmation will be received in approximately 2 weeks. If other documents are required, notification will be sent. This will be followed by an official letter and the necessary visa supporting documents.

## 4 ARRIVE AT THE MFU CAMPUS

Provide original copies of all necessary documents and pay application fee. Arrive 2 weeks before the registration date to participate in the orientation and 'how to live and learn' activities.

## 5 REGISTER FOR CLASSES

Once registered, cash payment of full fees must be made, you then become an official Mae Fah Luang University student!

## MFU ADMISSION REQUIREMENTS

### Undergraduate

- High school certificate or equivalent to grade 12, as certified by the Ministry of Education

### Graduate

- Bachelor's degree or equivalent from an accredited university with GPA of 2.5 or above
- If GPA below 2.5 applicants must have shown strength in their core courses or have at least 1-year of work experience in a relevant field

### Doctorate

- Master's degree or equivalent from an accredited university or Bachelor's degree (Honours) in related field, with GPA of 3.25 or above
- Proven experience in research/thesis writing

*\*All applications will be considered based on their individual merit*

### ENGLISH PROFICIENCY TESTS

Non native English speakers must provide English proficiency test scores, otherwise an MFU Placement Test must be taken.

#### Undergraduate

- 450 TOEFL
- 5.5 IELTS

#### Graduate/Doctorate

- 550 TOEFL

## TRANSFER TO MFU

MFU welcomes applications by students from all around the world, at any time throughout the year. Students from all accredited colleges and universities are invited to submit their official transcripts for credit transfer to MFU. The credit transfer to MFU must be processed and approved within the first term of study.

## COSTS

<i>Approximate Fees</i>	<i>Thai Baht</i>	<i>U.S. Dollars</i>
Average Undergraduate Fees Per Semester	30,450 THB	\$ 1,015
Range of Graduate Fees Per Semester	25,000 THB - 143,600 THB	\$833 - \$4,787
Damage Insurance Fees	2,000 THB	\$ 67
Health / Accident Insurance Fee	2,700 THB	\$ 90
Freshy Package (1st Semester)	2,000 THB	\$ 67
Dormitories (per Semester)	4,000 THB	\$ 133

\*1 U.S. Dollar = 30 THB and is subject to change

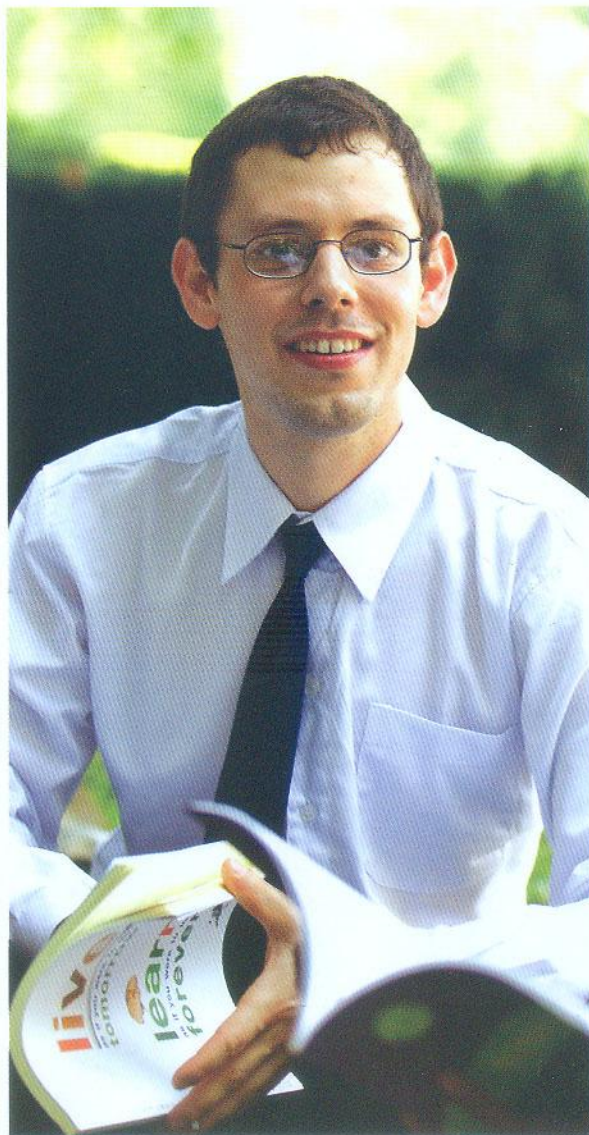
## ACADEMIC CALENDAR

### First Semester (June Start)

May	Registration
Early June	Classes Begin
Late July	Midterm Examinations
Late September	Final Examinations
Early October	End of Semester

### Second Semester (November Start)

Late October	Registration
November	Classes Begin
Late December	Midterm Examinations
Mid February	Final Examinations
Early March	End of Semester







## **SPORTS FACILITIES**

- Indoor Stadium and Sports Centres
- Gymnasiums
- Basketball Courts
- Badminton Courts
- Outdoor Track and Field
- Tennis Courts
- Olympic Swimming Pool
- Fitness Park
- Running Trails
- Cycling tracks

## **MFU HOSPITAL**

Fully functional hospital offering services in both conventional modern medicine as well as a wide and ever-increasing range of alternative treatments.

## **ACCOMMODATION**

All international students are guaranteed dormitory rooms on campus for their period of study at MFU.

## **TRANSPORT**

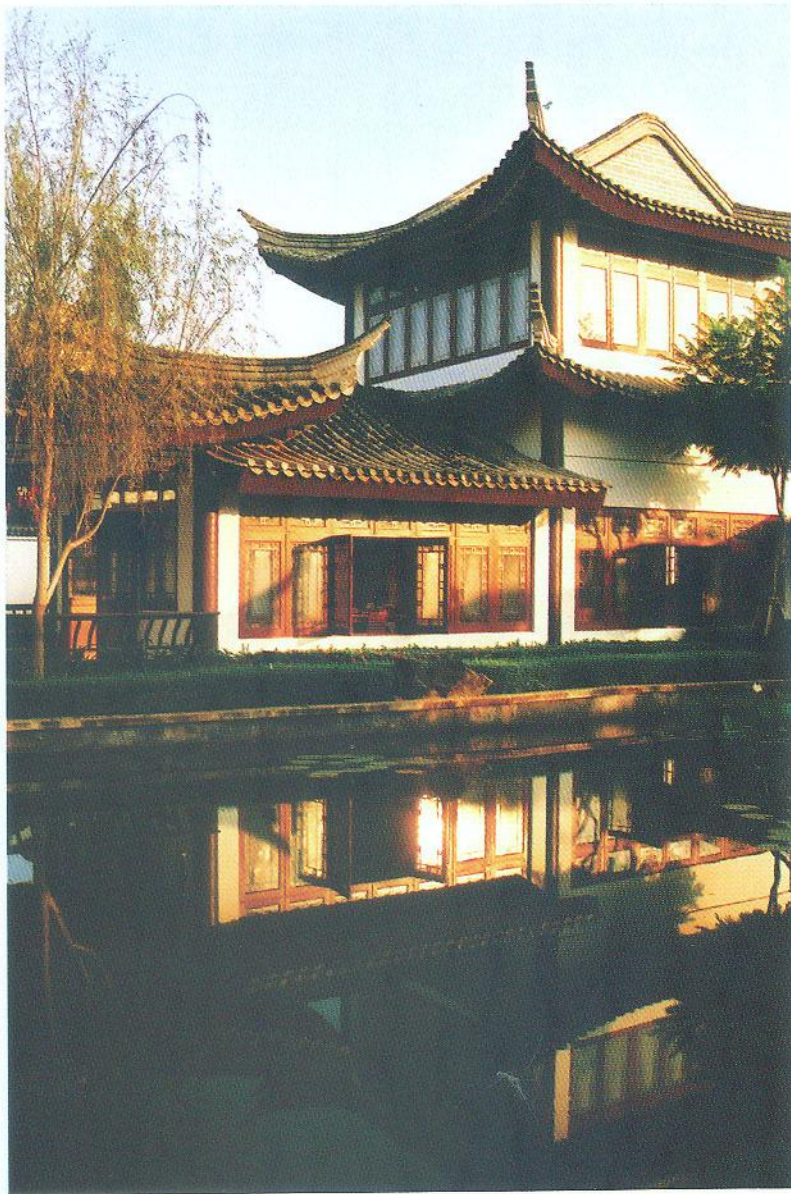
On campus free electronic vehicles are provided to take students to every area within the university.

## THE SIRINDHORN CHINESE LANGUAGE AND CULTURE CENTRE

Providing state-of-the-art facilities for Chinese language and culture studies, it is also home to the first Confucius Institute based outside of China.

## OTHER INSTITUTES AND CENTRES

NREM (Institute for the study of Natural Resources and Environmental Management), Tea Institute, French-Upper Mekong Sub-region Academic Cooperation Centre, The Project on Establishment of the Mekong Basin Civilization Museum, MFU Business Incubator, Centre for Academic Services, Information Technology Services, Learning Resources and Educational Media Centre, Living and Learning Support Centre, Scientific and Technological Instruments Centre, and several others.





# FAST FACTS AND FIGURES '12

## STUDENT BODY

**10,768**

Total Students

**31%** **69%**

Male Female

**1,017**

Graduate

**9,729**

Undergraduate

**370**

International Students

**18**

Countries

**9,343**

Alumni

## INTERNATIONAL STUDENTS

**186** **98**

Myanmar PR China

**26**

Lao PDR

**22**

Sth Korea

**8**

Sri Lanka

**6**

Japan

**6**

Butan

## ACADEMIC PROGRAMMES

**71**

Programmes

**32**

Bachelors

**23**

Masters

**16**

PhD

**6**

International Programmes

**11**

Schools

**463**

Academic Staff

## ACTIVE GLOBAL PARTNERS

**37**

Agreements

**17+1**

Countries





**STUDY IN  
ENGLISH**  
AT THE  
**UNIVERSITY  
IN THE PARK**  
LOCATED IN  
**THE MIDST  
OF NATURE**  
CHIANG RAI,  
THAILAND

**MAE FAH LUANG  
UNIVERSITY**



New  
**DIFFERENT**  
Better

