



Mae Fah Luang University

Chiang Rai, Thailand



*“In Search for Quality Education
and Human Resources”*

Message from the President



Dr. Vanchai Sirichana

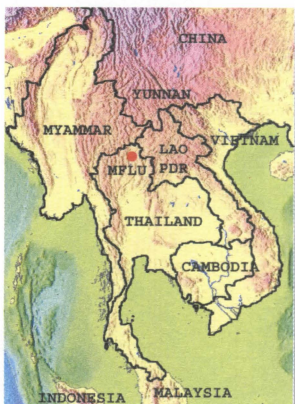
Mae Fah Luang University (MFLU) was established by the Royal Charter in September 1998. The university has aimed to offer higher education at international standards while nurturing a closely knitted community of scholars and researchers.

Studying at MFLU will enable student to be well-rounded in major subjects while being trained to be creative and enthusiastic in the competitive world. Students will be also encouraged to develop effective communication skills. The choice to study in MFLU will offer a quality of education and an opportunity to live in international and healthy environment at the lower expenses.

To study at MFLU is a wise choice. I am looking forward to welcoming all international students at Mae Fah Luang University and wish you happy and have a rapid progress in our university.



Background



Mae Fah Luang University (MFLU) was established under the Royal Charter in September 1998, as a public autonomous university with the financial supports from the Royal Thai Government. The establishment was in

response to the needs of people in the North of Thailand and to commemorate the gracious contribution of the King's mother. Mae Fah Luang University is fully accredited by the Ministry of Education of Thailand and has closed collaboration with other leading institutes.

Mae Fah Luang University is located in Chiang Rai, the northernmost province, amidst the strategic location of the Greater Mekong Sub-region (GMS) which covering Thailand, Myanmar, Laos PDR, Cambodia, Vietnam and Yunnan Province (Southern China).

Aims

The university aims to be:

- a quality university in the region
- excellent in selected subjects
- a center for higher education of the region
- a think-tank of the community and country

Tuition Fees

Tuition fees and accommodation on campus are approximately listed as below :

Undergraduate Programs

Semester 1: 650 USD

Semester 2: 450 USD

Graduate Programs 4,500 USD

(per programs / 4 semesters)

Scholarship Award

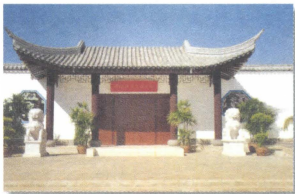
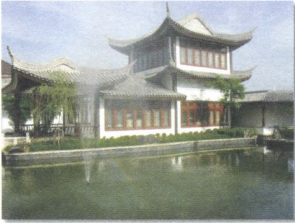
In addition to the scholarship offered to local students, starting from 2003 academic year, MFLU offers scholarships to the academically outstanding students from the GMS countries.

Visa

MFLU will facilitate foreign students in applying the application for visa at the Royal Thai Embassy or Consulates in respective countries.



The Sirindhorn Chinese Language and Cultural Center



The Sirindhorn Chinese Language and Cultural Center was established as a gift to Thai people from the government of People's Republic of China to commemorate the centenary anniversary of the King's mother and to mark a long-standing strengthened relationship of China and Thailand. The center is aimed to be a center for Chinese language education and cultural exchange for Thailand and the region.

The center was financially supported by the government of China and Royal Thai Government and having closed academic cooperation with leading Chinese Universities. The center offers the program of Chinese language and cultural exchange at different level.

Graduate Programs

School of Sciences

- Materials Science
- Ceramic Industrial Technology
- Biotechnology
- Biological Science
- Applied Chemistry
- Computational Science

School of Management

- Business Administration

School of Liberal Arts

- Education Management
- Public Administration

Doctorate Programs

- Biotechnology
- Materials Science



Education System



MFLU applies the semester system to all programs. The first semester runs from June to September while the second semester is from November to February. English is a major medium of instruction. Thai language will be specially provided for foreign students.

Student Admission



MFLU is open to admit students from worldwide. Application can be made directly to the Direct of Admissions. Students from universities, which have been accredited by certified/authorized bodies, are able to transfer their credits to MFLU for continuing education.

The application form can be downloaded from the URL: www.mfu.ac.th

In Search for Excellence

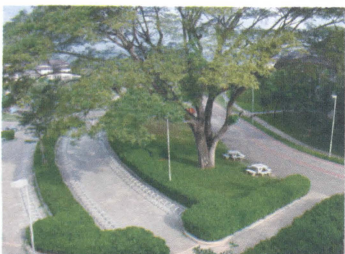
Visions

MFLU is a higher education of high quality with international standards. It aims to excel in selected academic areas, enhancing the quality of graduates and human resources for the country and the region. It will be a source of knowledge enrichment and creation with the capability of applying the knowledge to benefit the society and industrial sector under synergized cooperation with external agencies. Meanwhile, it will retain the national identity through promotion of national arts and culture.

Missions

MFLU has a strong commitment to the following missions:

1. Teaching
2. Research
3. Academic services to society
4. Promoting arts and culture
5. Technology adaptation and modification



Study Programs Offered

Undergraduate Programs

School of Liberal Arts

- English Language
- Chinese Language

School of Information Technology

- Information Technology
- Computer Sciences
- Computer Engineering
- Information and Communication Technology

School of Management

- Accounting
- Economics
- Business Administration
- Tourism Management

School of Agro-industry

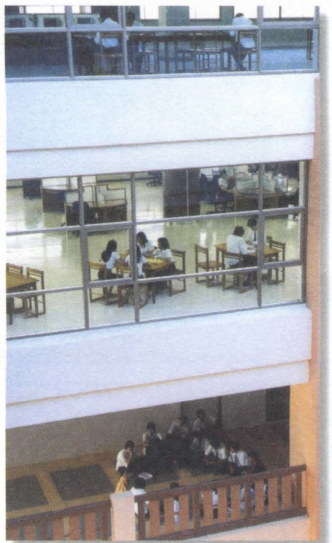
- Food Technology
- Postharvest Technology and Package

School of Sciences

- Biotechnology

School of Laws

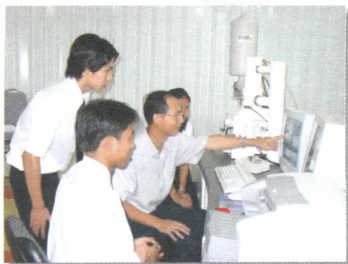
- Laws (Teaching in Thai)



Facilities

Scientific and Technological Equipments Center

This center is fully equipped with sophisticated scientific equipments to serve as a service center for scientific laboratory and research.



Information Technology Services Center

The center aims to be a center of excellence for information technology service and equipped with all state of the arts of IT facilities. Student will have an opportunity to hand on experience with experts and world class facilities.



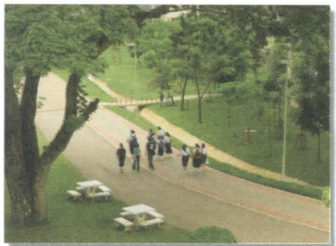
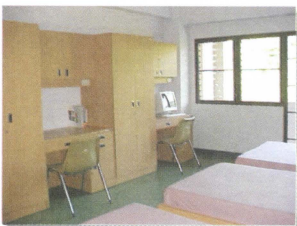
Library and Educational Media Center

This center offers services on numerous educational resources varies from printed materials, electronic media and audio visual aids as well as teaching and learning materials.



Accommodation

Dormitories are provided on campus. Among the basic facilities, accessible internet cable is readily available. Living on campus will give you an opportunity to socialize with local and foreign students including enjoying student activities. In addition, sports complex is provided on campus in response to the commitment of healthy practice.



At Glance

Located amidst hillside area in Chiang Rai Province, MFLU is surrounded by friendly environment of unique buildings, diversified plantation and green atmosphere under the concept of “*University in the Park*”. MFLU commits to support the student livings and learning based on safe and healthy environment. Living in Chiang Rai, the northernmost province, will offer you to discover the Northern Thailand of which is rich of cultural heritage and natural resources diversity as well as student will be able to easily access the neighboring countries.



For more information, please contact :

International Affairs Division

Mae Fah Luang University

Chiang Rai 57100, Thailand.

Phone : (+66 53) 916 023, 916 026

Facsimile : (+66 53) 916 034

Bangkok Office : (+66 2) 641 0822-4

E-mail : inter@mfu.ac.th

URL : <http://www.mfu.ac.th>

August 2003